



CONSTRUCTION PLANS FOR NE 16th AVE DRAINAGE IMPROVEMENTS

ITB NO. CIP 230427

LOCAL UTILITIES		
UTILITY COMPANY	PHONE NUMBER	EMERGENCY
AT&T	(352) 284-8110	
CENTURY LINK	(352) 368-8817	
COX COMMUNICATIONS	(888) 269-9693	
TECO GAS	(352) 622-0112	(352) 622-0111
CITY OF OCALA ELECTRIC	(352) 351-6650	(352) 351-6666
CITY OF OCALA TRAFFIC	(352) 351-6733	
CITY OF OCALA WATER/SEWER	(352) 351-6772	(352) 351-6775

CITY OF OCALA
CITY ENGINEER'S OFFICE
STORMWATER ENGINEERING DIVISION
1805 NE 30th AVE, BLDG 600
OCALA, FLORIDA 34470

CITY MANAGER - PETER LEE
CITY ENGINEER - SEAN LANIER

100% PLANS

STATEMENT OF OWNERSHIP

PROPERTY SHOWN AND DESCRIBE HEREON IS OWNED BY THE CITY OF OCALA AND THAT I, MY SUCCESSORS OR ASSIGNED WILL PERPETUALLY MAINTAIN THE IMPROVEMENTS AS SHOWN ON THIS PLAN.

DATE SIGNED: _____
SEAN LANIER, P.E., CFM
CITY ENGINEER / DIRECTOR OF ENGINEERING & WATER RESOURCES
1805 NE 30TH AVE, BLDG 600
OCALA, FL 34470

U.S. Department of Transportation, Manual on Uniform Traffic Control Devices (2009 Version with Revisions)

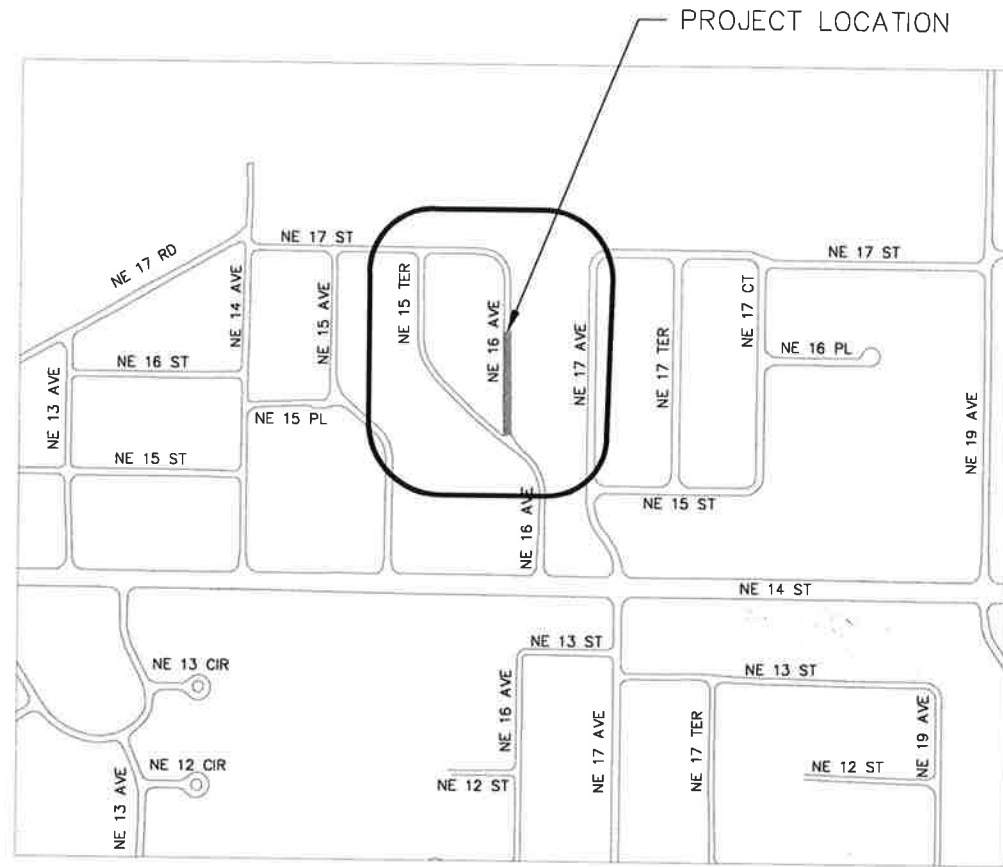
Florida Department of Transportation, Standard Plans for Road and Bridge Construction (FY 2020-2021 Version)

Florida Department of Transportation, Standard Specifications for Road and Bridge Construction (July 2020 Version)

Florida Department of Transportation, Manual of Uniform Minimum Standards for Design, Construction, & Maintenance of Streets & Highways "Florida Green Book" (2016 Version, Effective June 2017)

City of Ocala, Land Development Code (FY 2020-2021 Version)

City of Ocala, Standard Specifications For Construction of Streets, Stormwater, Traffic, Water & Sewer Infrastructure (October 2018 Version)



SECTION 09, TOWNSHIP 15 SOUTH, RANGE 02 EAST

INDEX OF SHEETS

SHEET NO.	DESCRIPTION
1.	TITLE SHEET
2-3.	GENERAL & CONSTRUCTION NOTES
4.	PLAN & PROFILE (STA. 0+00 TO 2+75)
5.	PLAN & PROFILE (STA. 3+00 TO 4+75)
6.	DRAINAGE RETENTION AREA NOTES
7-7.1	FORCE MAIN ROUTE
8.	CROSS SECTIONS (0+25 TO 1+00)
9.	CROSS SECTIONS (1+50 TO 2+25)
10.	CROSS SECTIONS (2+75 TO 3+25)
11.	CROSS SECTIONS (3+50 TO 4+00)
12.	CROSS SECTIONS (4+25 TO 4+75)
13.	SAW CUT AND MATCH DETAIL AND ROAD TYPICAL
14.	STORMWATER POLLUTION PROTECTION PLAN (SWPPP)
15.	STRIPING PLANS
16-17.	DETAILS SHEETS

PROJECT DESIGN SPEED = 40 MPH
PROJECT POSTED SPEED = 30 MPH

PAYAL S. PANDYA, PE, CFM
 Registered Engineer No. 73210
 State of Florida, DATE: _____
 Valid only with embossed seal.

Payal Pandya
 04/20/2023

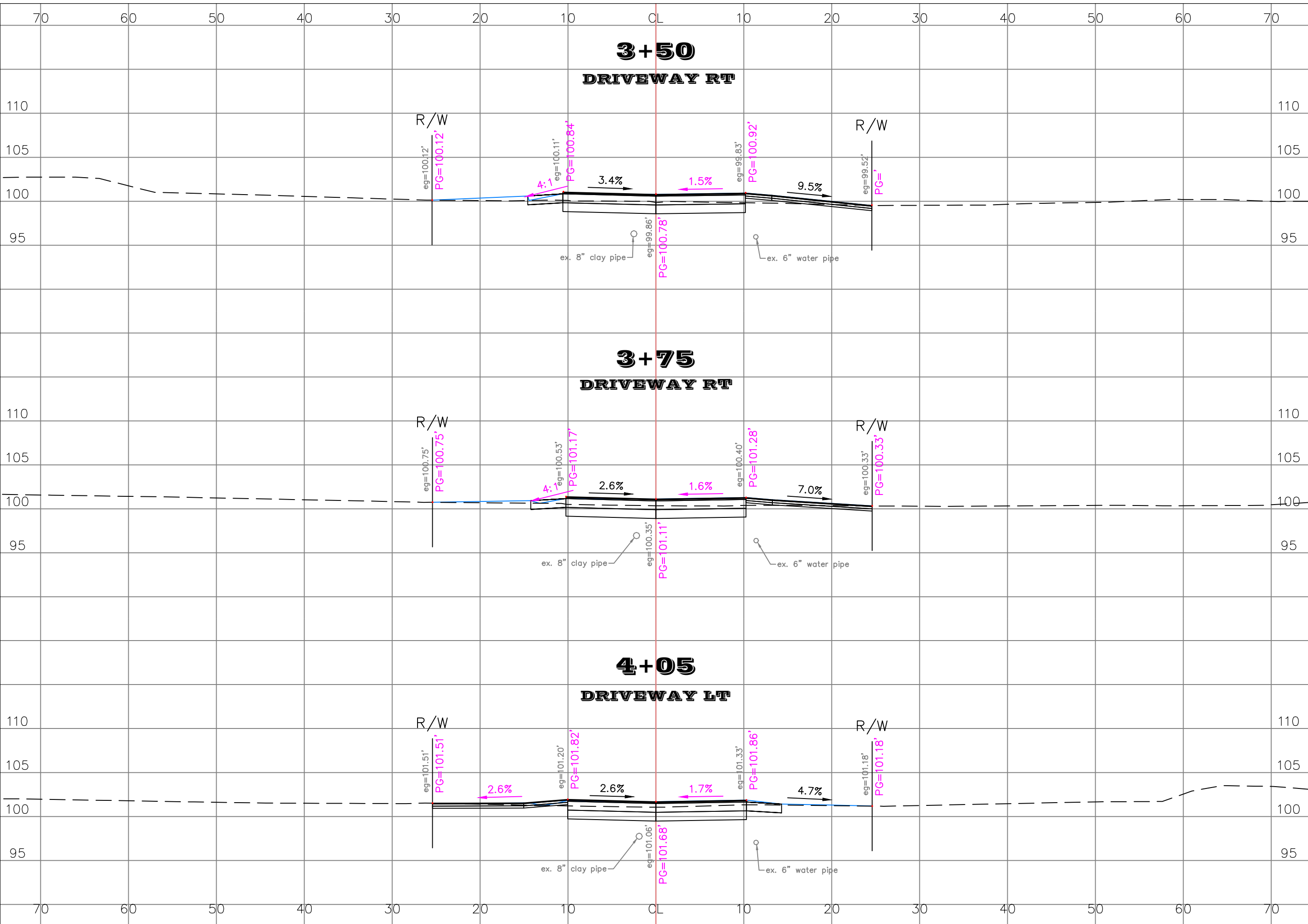
R. KELLY ROBERTS, P.S.M.
 Professional Surveyor and Mapper No. 5558
 State of Florida, DATE: _____
 Valid only with embossed seal.



**Know what's below.
Call before you dig.**

DRAWN BY:	MDM/DF
DESIGNED BY:	PSP
PROJ.#:	13201
F.B.#:	569/31
DATE DRAWN:	06/28/19

PREPARED BY CITY OF OCALA
 CITY ENGINEER'S OFFICE
 STORMWATER ENGINEERING DIVISION
 1805 NE 30th AVE, BLDG 600
 OCALA, FLORIDA 34470



SHEET DESCRIPTION: CROSS SECTIONS (2+95 TO 3+53)

				REV. BY
				DATE
				REV. BY

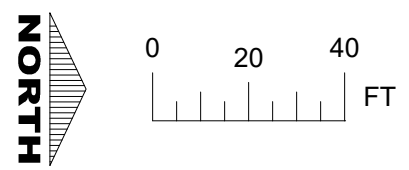
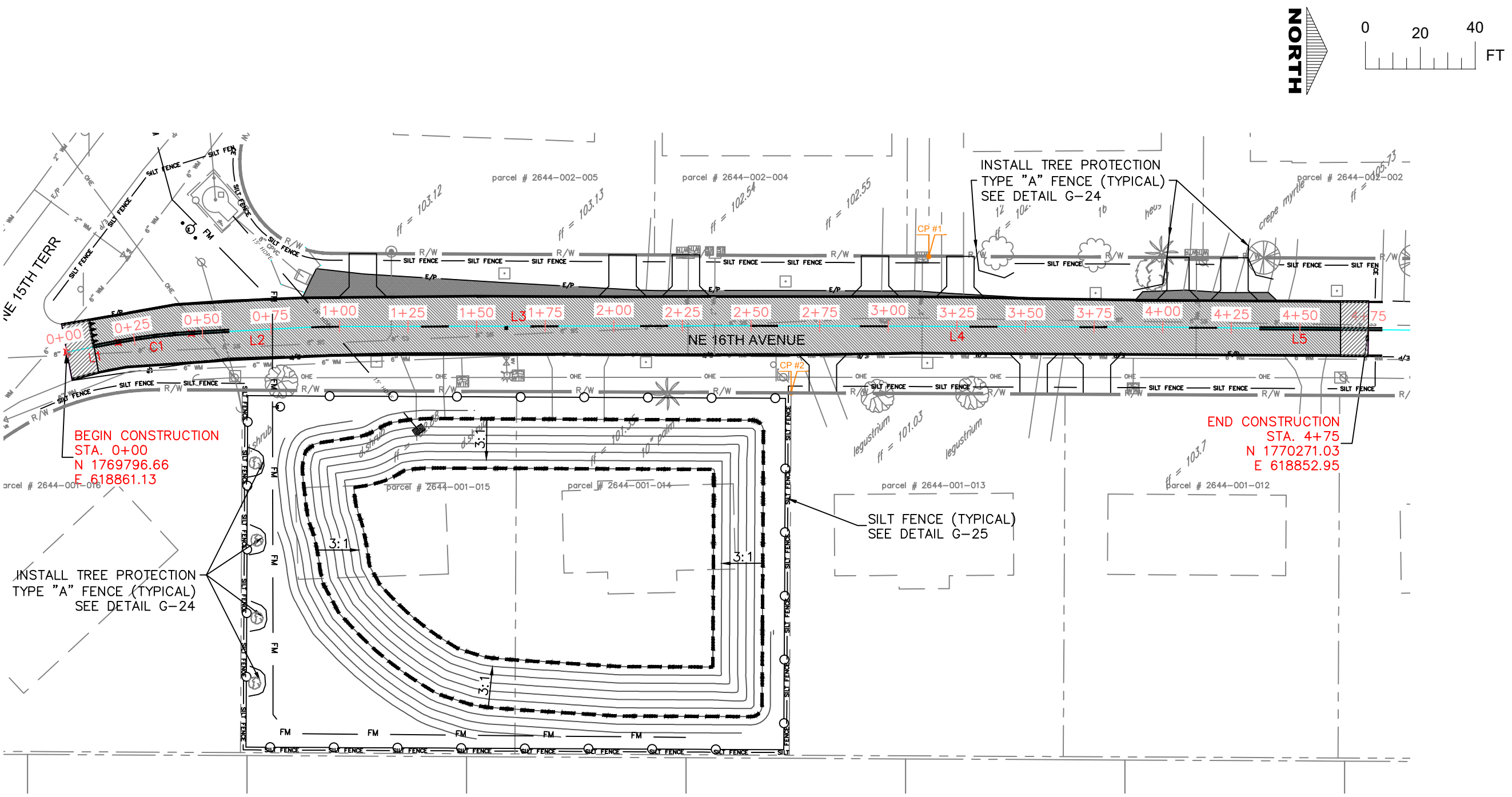
PAYAL S. PANDYA, PE, CFM
 Registered Engineer No. 73210
 State of Florida, DATE: _____
 Valid only with embossed seal.

PROJECT DESCRIPTION: NE 16th AVE DRAINAGE IMPROVEMENTS



PREPARED BY: THE CITY OF OCALA
 CITY ENGINEER'S OFFICE
 STORMWATER ENGINEERING DIVISION

DRAWN BY:	MDM/DF
DESIGNED BY:	PSP
HORIZ.:	1" = 10'
VERT.:	1" = 10'
PROJ.#:	13201
F.B.#:	589/31
DATE DRAWN:	06/28/19



BEGIN CONSTRUCTION
STA. 0+00
N 1769796.66
E 618861.13

END CONSTRUCTION
STA. 4+75
N 1770271.03
E 618852.95

INSTALL TREE PROTECTION
TYPE "A" FENCE (TYPICAL)
SEE DETAIL G-24

INSTALL TREE PROTECTION
TYPE "A" FENCE (TYPICAL)
SEE DETAIL G-24

SILT FENCE (TYPICAL)
SEE DETAIL G-25

NOTES:

- * CONTRACTOR SHALL PERIODICALLY SWEEP EXISTING ON-SITE PAVED SURFACES AS WELL AS ALL ABUTTING CITY STREETS, COUNTY ROADS, AND STATE HIGHWAYS (AS APPROPRIATE FOR THIS PARTICULAR PROJECT) TO KEEP THOSE SURFACES IN A SUBSTANTIALLY SEDIMENT-FREE CONDITION. SWEEPING SHALL BE DONE ON A PERIODIC, AS-NEEDED BASIS THROUGHOUT THE WORK WEEK INCLUDING, MOST IMPORTANTLY, AFTER EVERY RAIN EVENT AND EVERY FRIDAY AFTERNOON PRIOR TO CEASING WORK FOR THE WEEK.
- * CONTRACTOR SHALL DEVELOP AND IMPLEMENT A PLAN TO ASSURE THAT ALL WASTE, SUCH AS DISCARDED BUILDING MATERIALS, CONCRETE TRUCK WASH-OUT, CHEMICALS, LITTER, AND SANITARY WASTE, ARE PROPERLY CONTROLLED WHILE ON-SITE, AND TRANSPORTED AND DISPOSED OF (OFF-SITE) IN ACCORDANCE WITH ALL APPLICABLE LOCAL, STATE, AND FEDERAL REGULATIONS. NO WASTE MATERIALS OF ANY KIND ARE PERMITTED TO BE BURIED ON-SITE OR DISCHARGED TO SURFACE WATERS OF THE STATE OR TO THE CITY'S STORMWATER SYSTEM.
- * ALL MATERIALS, MACHINERY, AND VEHICLES SHALL BE STORED ON-SITE IN AN ORDERLY, ORGANIZED FASHION.

DATUM '88

CP #1 (732)
EL = 99.904
4X4 NO ID
N = 1770110.8221
E = 618826.2907

CP #2 (735)
EL = 98.972
4X4 NO ID
N = 1770060.6123
E = 618875.9932

SHEET DESCRIPTION: STORMWATER POLLUTION PROTECTION PLAN

DATE	REV. BY

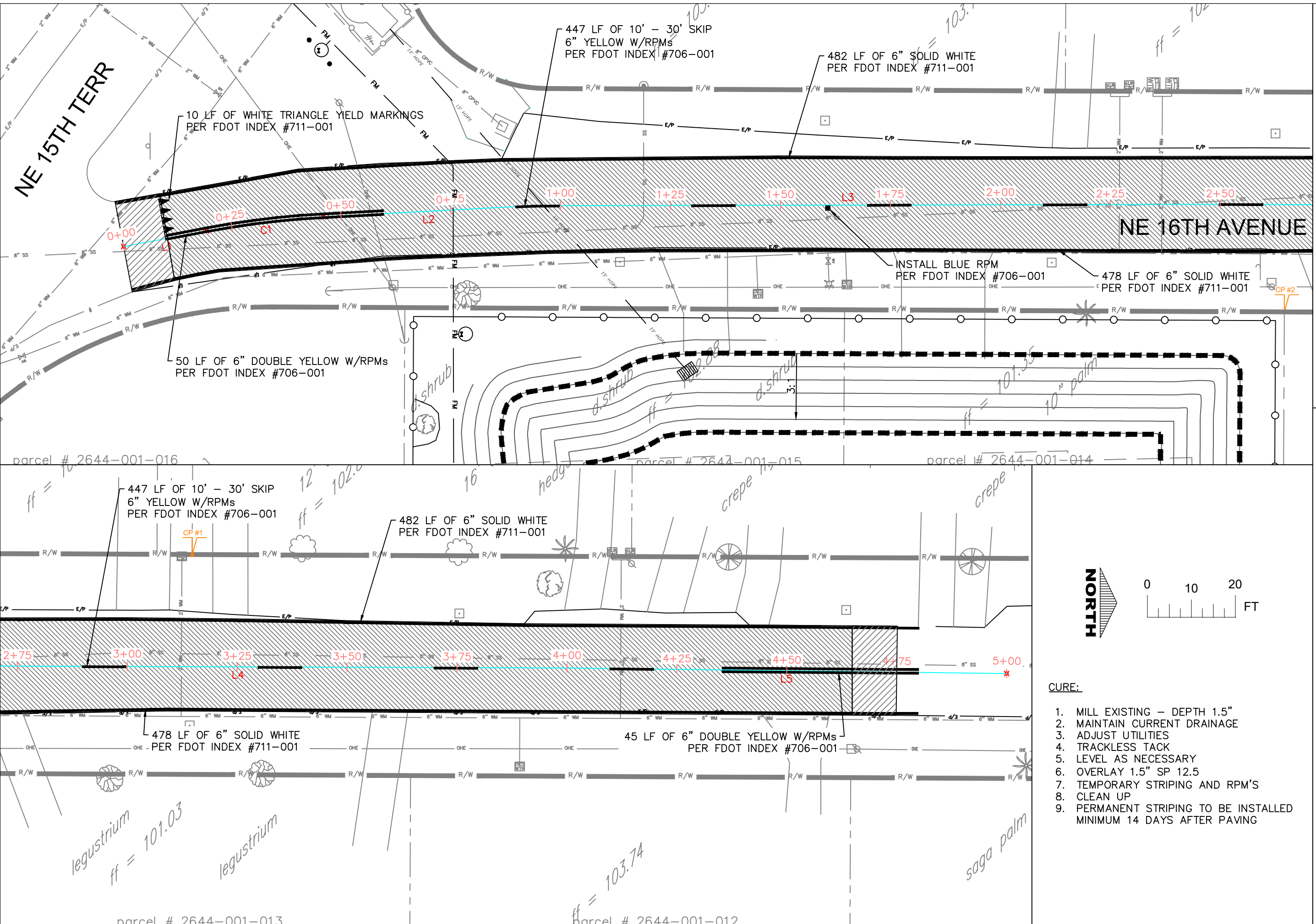
PAYAL S. PANDYA, PE, CFM
Registered Engineer No. 73210
State of Florida, DATE: _____
Valid only with embossed seal.

PROJECT DESCRIPTION: NE 16th AVE DRAINAGE IMPROVEMENTS



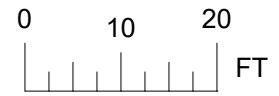
PREPARED BY: THE CITY OF OCALA
CITY ENGINEER'S OFFICE
STORMWATER ENGINEERING DIVISION

DRAWN BY:	MDM/DF
DESIGNED BY:	PSP
HORIZ.:	1" = 40'
VERT.:	1" = 40'
PROJ.#:	13201
F.B.#:	569/31
DATE DRAWN:	06/28/19



NE 15TH TERR

NE 16TH AVENUE



- CURE:**
1. MILL EXISTING - DEPTH 1.5"
 2. MAINTAIN CURRENT DRAINAGE
 3. ADJUST UTILITIES
 4. TRACKLESS TACK
 5. LEVEL AS NECESSARY
 6. OVERLAY 1.5" SP 12.5
 7. TEMPORARY STRIPING AND RPM'S
 8. CLEAN UP
 9. PERMANENT STRIPING TO BE INSTALLED MINIMUM 14 DAYS AFTER PAVING

SHEET DESCRIPTION: STRIPING PLAN

PROJECT DESCRIPTION: NE 16th AVE DRAINAGE IMPROVEMENTS

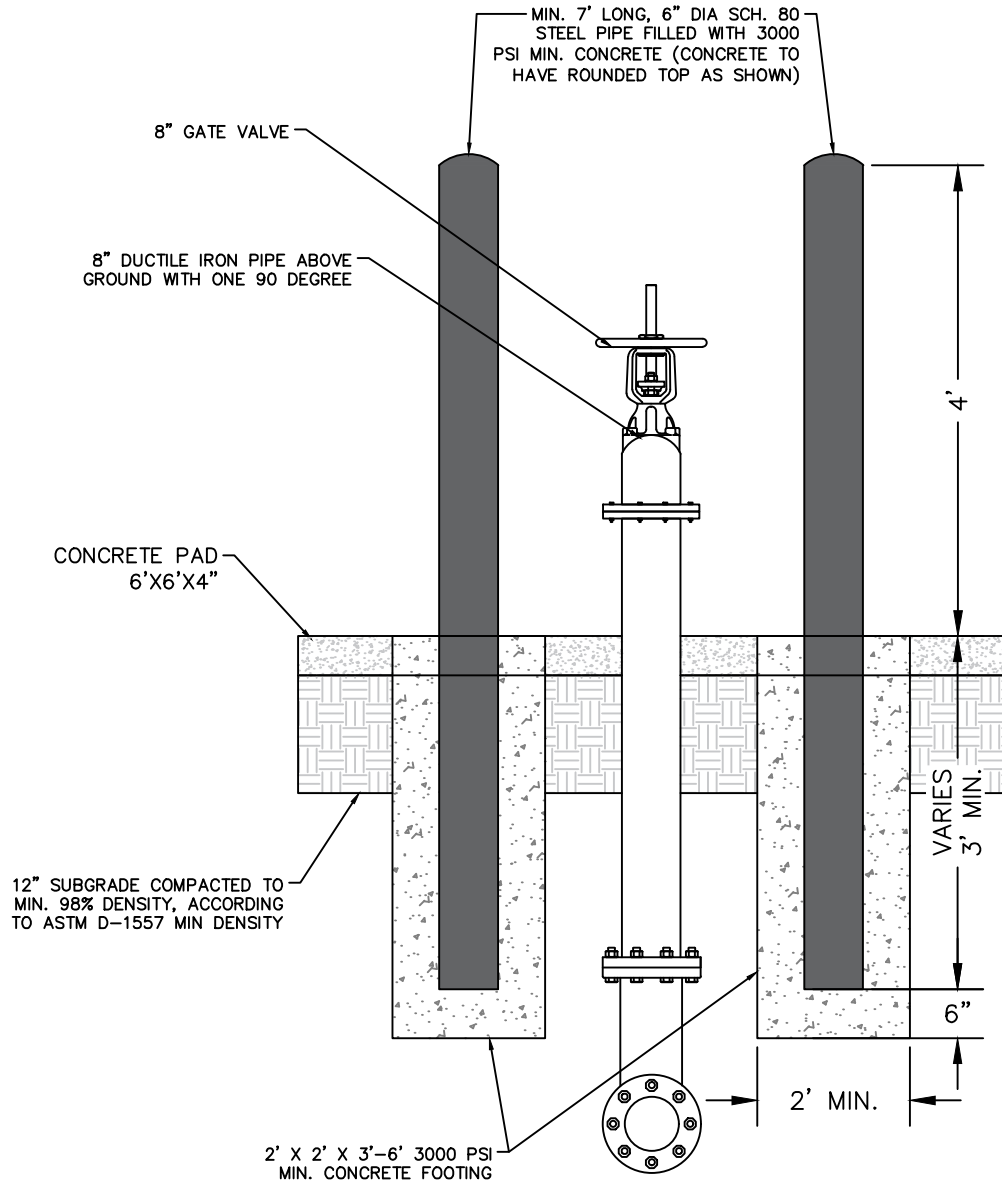
DATE	REV. BY

PAYAL S. PANDYA, PE, CFM
 Registered Engineer No. 73210
 State of Florida, DATE: _____
 Valid only with embossed seal.

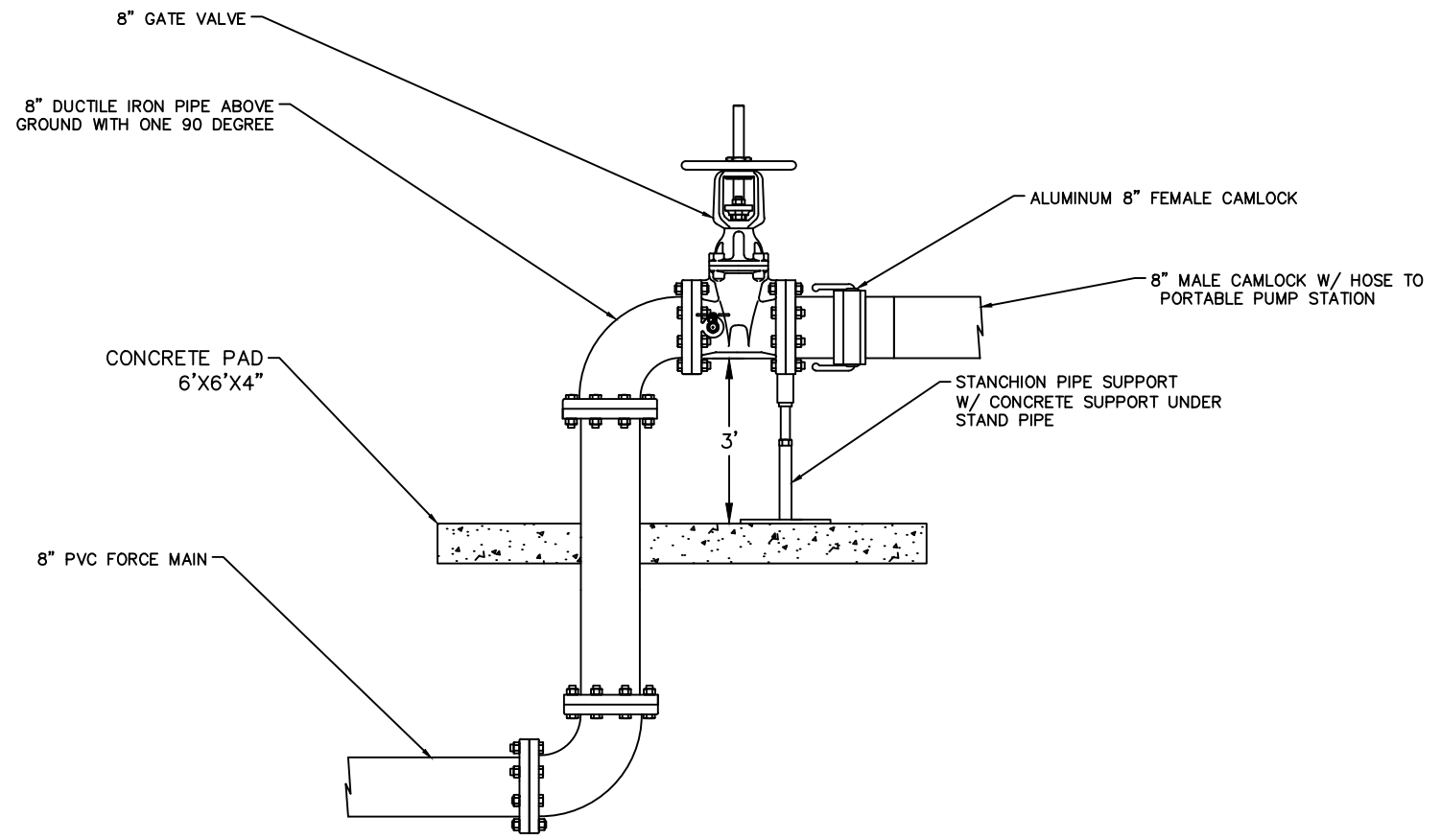
OCALA
 City Engineer's Office

PREPARED BY: THE CITY OF OCALA
 CITY ENGINEER'S OFFICE
 STORMWATER ENGINEERING DIVISION

DRAWN BY:	MDM/DF
DESIGNED BY:	PSP
HORIZ.:	1" = 40'
VERT.:	1" = 40'
PROJ.#:	13201
F.B.#:	589/31
DATE DRAWN:	06/28/19



STAND PIPE DETAIL



STAND PIPE DETAIL

PROJECT DESCRIPTION: NE 16th AVE DRAINAGE IMPROVEMENTS

DRAWN BY:	MDM/DF
DESIGNED BY:	PSP
HORIZ.:	N/A
VERT.:	N/A
PROJ.#:	13201
F.B.#:	569/31
DATE DRAWN:	06/28/19

17
OF
17

SHEET DESCRIPTION: DETAILS SHEET CONTINUED

PAYAL S. PANDYA, PE, CFM
Registered Engineer No. 73210
State of Florida, DATE: _____
Valid only with embossed seal.

DATE _____ REV. BY _____